

R&S®CP001 Antenna Remote Control Software (ARCOS)

All-purpose software for controlling different
Rohde & Schwarz antenna systems

New



Features

- ▀ Standardized operating concept for different systems
- ▀ Control routines can be integrated into customer-specific software projects
- ▀ Supports RS-232-C, RS-485 and LAN interfaces

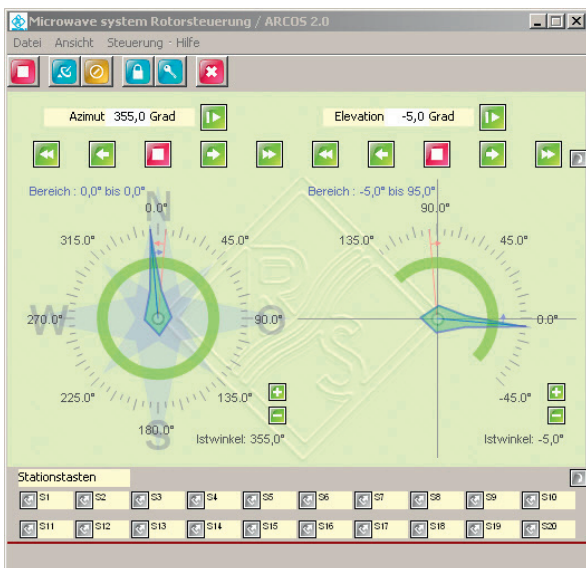
Brief description

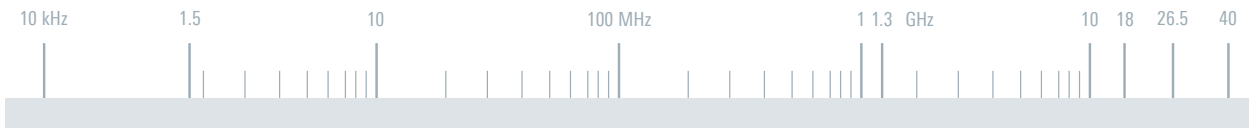
The R&S®CP001 antenna remote control software (ARCOS) can be used to control the following Rohde & Schwarz antenna systems:

- ▀ R&S®AC008, R&S®AC090, R&S®AC180 and R&S®AC300 including feeds and additional antennas
- ▀ R&S®HL451 and R&S®HL471 HF antennas in combination with R&S®RD130 antenna rotator and R&S®GB130 or R&S®BG030 control unit
- ▀ R&S®HL007A2 log-periodic antenna in combination with R&S®ZS107 polarization selector
- ▀ R&S®HL024S2, R&S®HL024S7, R&S®HL024S8, R&S®HL024S9 and R&S®HL05S7 log-periodic antennas

The control unit of the specific antenna system is connected to the control computer (PC) via a serial interface.

The R&S®CP001 can be used in standalone mode or in a multiworkstation network in which multiple antenna systems are controlled by several PCs.





Specifications	
System requirements	Windows XP operating system
Interfaces	
External	RS-232-C, RS-485
Internal	TCP/IP
Supported control units from Rohde & Schwarz	R&S®GX300, R&S®GV300 R&S®GB016 R&S®GB130 R&S®BG030

Ordering information	Type	Order No.
Antenna Remote Control Software (ARCOS)	R&S®CP001	
For R&S®AC090/AC180/AC300 SHF directional antenna systems		4069.6384.02
For R&S®AC008 microwave directional antenna		4069.6384.03
For R&S®HL451/HL471 HF antenna systems in combination with R&S®RD130 and R&S®GB130 or R&S®BG030		4069.6384.04
For R&S®HL007A2 log-periodic antenna in combination with R&S®ZS107 polarization selector		4069.6384.05
For R&S®HL024S2/HL024S7/HL024S8/HL024S9/HL050S7 microwave feeds in combination with R&S®GB016		4069.6384.06

